

# RAM<sup>®</sup> Mounting Systems

PATENTED & PATENTS PENDING



**NPI has a Lifetime Warranty on all RAM Mounting Systems**  
Detailed information regarding these warranties may be  
accessed on our web site at [www.ram-mount.com](http://www.ram-mount.com)

## NPI<sup>®</sup>

National Products Inc.

Tel: (206) 763-8361 Fax: (206) 763-9615

Web Site: <http://www.ram-mount.com>

e-mail: [info@ram-mount.com](mailto:info@ram-mount.com)

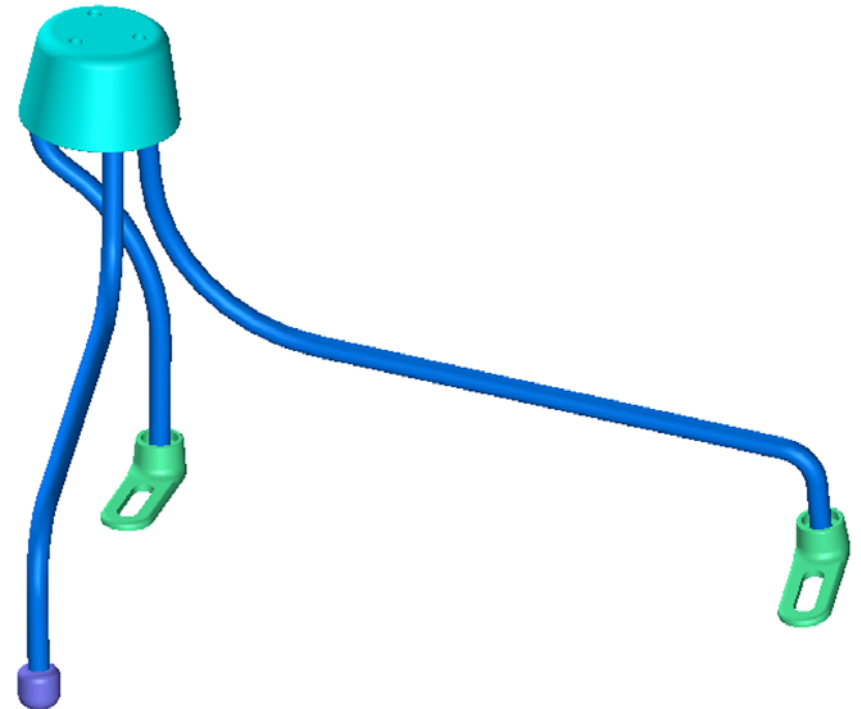
RMR-315-INS

OWNERS MANUAL

# RAM<sup>®</sup>

**RAM POD III UNIVERSAL VEHICLE MOUNT**

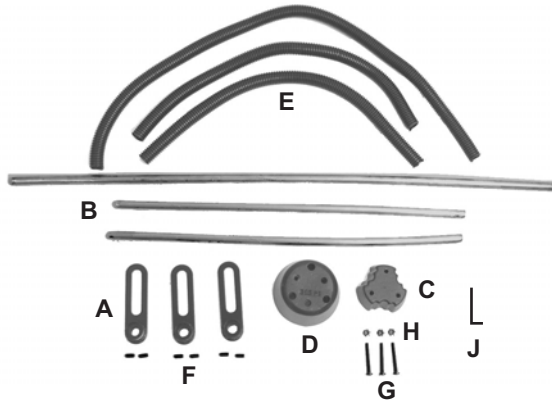
PATENTED & PATENTS PENDING



**Fits Most Any Vehicle**  
**Mounts Laptops, Tablets, Keyboards, etc.**

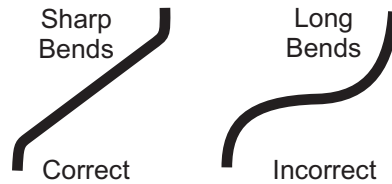
# CONTENTS, DESCRIPTION & ASSEMBLY INSTRUCTIONS

Before proceeding with installation of any RAM Pod System, check the contents of package to make certain all parts are included. If any parts are missing, please contact NPI for a replacement part at: [support@ram-mount.com](mailto:support@ram-mount.com)



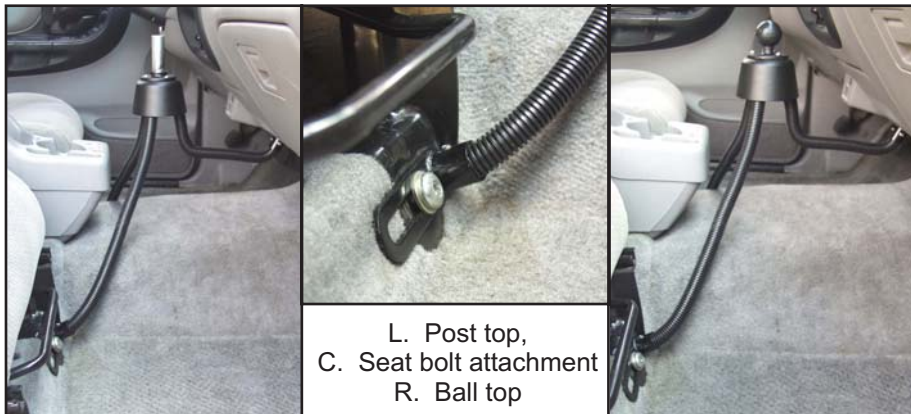
- A. 3 qty. Base With Slot & Hole
- B. 3 qty. RAM Flex Arm Rods
- C. 1 qty. Top Housing Wedge
- D. 1 qty. Top Housing
- E. Flexible Covering For Flex Arms
- F. 6 qty. #1/4"-20 X 1/2" Set Screws
- G. 3 qty. #10-24 X 1 3/4" Machine Screws
- H. 3 qty. #10-24 Hex Nuts
- J. 1 qty. Hex Wrench For Set Screws

The most stable mounting platform is achieved by making sharp bends and straight profiles in the flex arm rods not long bends as shown. Note: Making use of a vise or pipe to help make sharp bends is recommended.



## IMPORTANT!

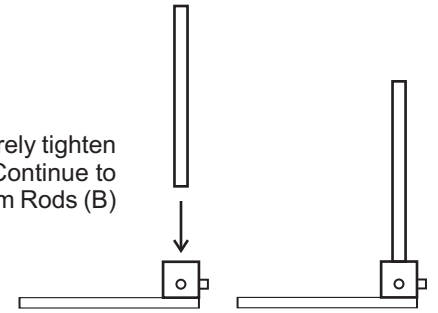
Before starting the installation, locate the best possible attachment points, such as seat bolts or any other existing screw, nut or bolt that will provide the Tri-Pod structural shape. This will make for the most stable mount. If desired you may drill your own attachment points and use bolts with washers & nuts or sheet metal screws without nuts



L. Post top,  
C. Seat bolt attachment  
R. Ball top

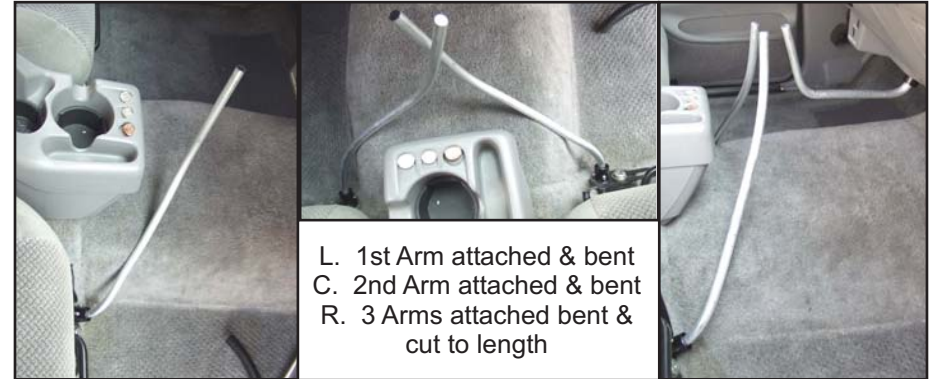
## STEP 1

Insert Flex Arm Rod (B) into Base (A) & securely tighten 2 qty. Set Screws (F) with Hex Wrench (J). Continue to do the same with the remaining 2 qty. Flex Arm Rods (B) & Bases (A).



## STEP 2

Taking one Flex Arm Assembly at a time, locate and attach it. Then start with the base end and bend the Flex Arm, using tight bends, and continue to shape the arm until it reaches its approximate location. Proceed to do this with the remaining 2 Flex Arm assemblies. Then mark the ends of the rods with a marker where they need to be cut. Remove the Flex Arm Assemblies, cut the rods and re-install them.



L. 1st Arm attached & bent  
C. 2nd Arm attached & bent  
R. 3 Arms attached bent & cut to length

## STEP 3

Slide Flexible Covering (E) onto each Flex Arm (B) and cut off even with end of arm. Install Top Housing Wedge (C) into Flex Arms as shown. Then install Top Housing (D) along with base with ball or post (not included) using Screws (G) & Nuts (H) and tighten. Screws may need to be re-tightened after mount is used or until wedge is fully engaged.

